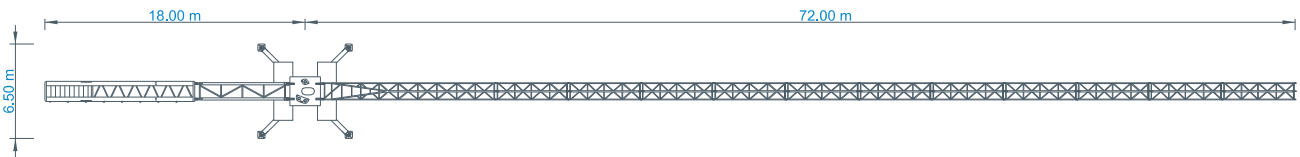
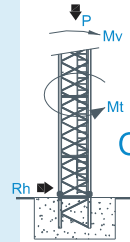
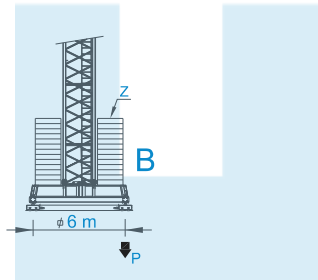
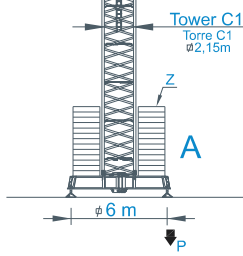


## LOADS CARGAS

Counterweight Contrapeso	Jib Length Comprimento da lança	Kg / m		m	Kg	18	21	26	31	36	38	43	48	50	55	60	65	70
		10000	5000															
18000kg 8x2000kg+2x1000kg	70 m L71A+L72A+L72B+L73+L74A+L74B+L75+L56+L56+L56+L56	17,5 m	34,7 m	17,5	5000	5000	5000	5000	4800	4500	3900	3500	3300	3000	2700	2400	2200	1800
18000kg 8x2000kg+2x1000kg	65 m L71A+L72A+L72B+L73+L74A+L74B+L75+L56+L56+L56	19,9 m	39,4 m	19,9	5000	5000	5000	5000	5000	5000	4500	4000	3800	3400	3100	2800	2400	
18000kg 8x2000kg+2x1000kg	60 m L71A+L72A+L72B+L73+L74A+L74B+L75+L56+L56	21,2 m	42 m	21,2	5000	5000	5000	5000	5000	5000	4900	4300	4100	3700	3300	2900		
17000kg 8x2000kg+1x1000kg	55 m L71A+L72A+L72B+L73+L74A+L74B+L75+L56+L56	21 m	41,5 m	21	5000	5000	5000	5000	5000	5000	4800	4300	4100	3700	3300			
16000kg 8x2000kg	50 m L71A+L72A+L72B+L73+L74A+L74B+L75+L56	21,4 m	42,4 m	21,4	5000	5000	5000	5000	5000	5000	4900	4400	4200					
15000kg 7x2000kg+1x1000kg	48 m L71A+L72A+L72B+L73+L75+L56+L56	21,6 m	42,7 m	21,6	5000	5000	5000	5000	5000	5000	5000	4400	4000					
13000kg 6x2000kg+1x1000kg	43 m L71A+L72A+L72B+L73+L75+L56+L56	20,6 m	40,8 m	20,6	5000	5000	5000	5000	5000	5000	4700	4300						
11000kg 5x2000kg+1x1000kg	38 m L71A+L72A+L72B+L73+L75+L56	20 m	39,7 m	20	5000	5000	5000	5000	5000	5000	5000	4800						
9000kg 4x2000kg+1x1000kg	36 m L71A+L73+L75+L56+L76+L65	19,8 m	39,3 m	19,8	5000	5000	5000	5000	5000	5100								
8000kg 4x2000kg	31 m L71A+L73+L75+L56+L76	19,5 m	38,7 m	19,5	5000	5000	5000	5000										
7000kg 3x2000kg+1x1000kg	26 m L71A+L73+L75+L56	19 m	37,6 m	19	5000	5000	5000											



## REACTIONS REACCIONES

BALLAST TABLE AND MAXIMUM REACTIONS FOR ALL JIB VERSIONS  
TABELA DE LASTRO E REACÇÕES MÁXIMAS PARA TODAS AS VERSÕES DE LANÇA

H m	A / B		C		Rh kN	Mt kNm
	Z kN	P kN	Mv kNm	P kN		
21	500	531	2226	441	66	237
24	600	556	2281	450	74	237
27	600	566	2343	459	82	237
30	600	576	2409	468	90	237
33	600	587	2484	477	98	237
36	700	624	2565	486	106	237
39	700	637	2654	495	114	237
42	800	675	2747	504	122	237
45	800	689	2848	513	130	237
48	900	725	2927	522	136	237

## CHARACTERISTICS CARACTERÍSTICAS

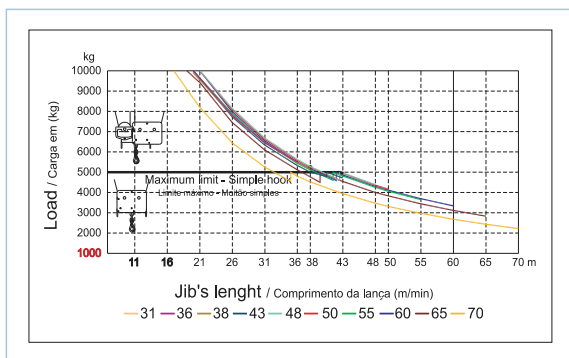
Motions Movimento	Speed Velocidade	Motor's power Pot. dos motores
Hoisting Elevação	0 a 100 m/min.	33 kW
	0 a 50 m/min.	
Slewing Orientação	0 a 1 r.p.m.	3x5 daN.m
Trolleying Distribuição	0 a 60 m/min.	5,5 kW
Travelling Translação	0 a 10 m/min.	2x4 kW
Electric power / Potência total		55 kVA
Tension / Tensão		400 V ±5% (50 Hz)

\* Option / Opção

## PARTS ELEMENTOS

		A (mm)	B (mm)	C (mm)	Peso (kg)
Jib section Lança	L71A	11970	1900	2900	6750
Jib section Lança	L72A	6185	1160	2260	1400
Jib section Lança	L72B	6195	1160	2260	1140
Jib section Lança	L73	5230	1160	2260	780
Jib section Lança	L74A	6165	1160	1950	830
Jib section Lança	L74B	6165	1160	1950	710
Jib section Lança	L75	5200	1160	1950	560
Jib section Lança	L56	5200	1160	1930	530
Jib section Lança	L76	5180	1160	1610	400
Jib section Lança	L65	5110	1160	1610	360
Jib section Lança	L66	5110	1160	1610	280
Tower section 12m Tramo torre 12m	C1	12000	2180	2180	4200
Tower section 6m Tramo torre 6m	C1	6130	2180	2180	2200
Tower section 3m Tramo torre 3m	C1	3195	2180	2180	1200
Telescopic section Tramo telescopagem	C1	3195	2250	2250	1360
Head Section Cabecote		2620	2180	2150	8000
Pyramid Piramide		2430	1300	760	1270
Counter-jib 1 Contra-lança		6475	1220	2300	2600
Counter-jib 2 Contra-lança		10550	1500	500	4000
Cross shaped base Chassis		8725	800	1370	4600
Cross shaped base Chassis	C1	4200	380	1370	1700
Ballast Contra-peso		1000	250	2530	1000
		1160	330	3140	2000
Most section Tramo de encastrar	C1	2280	2150	2150	850

## LOAD DIAGRAM DIAGRAMA DE CARGAS



## SPEED DIAGRAM DIAGRAMA DE VELOCIDADE

